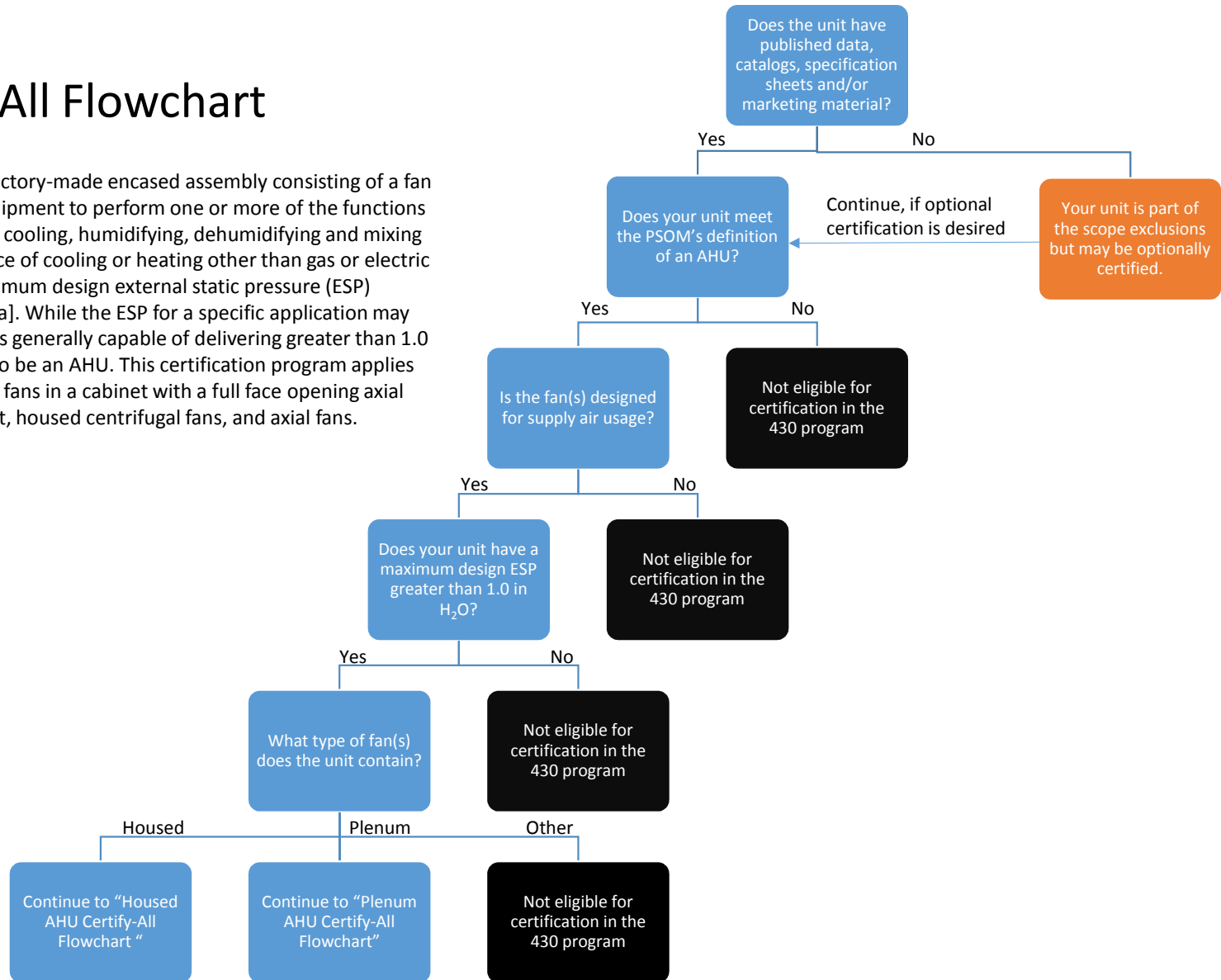
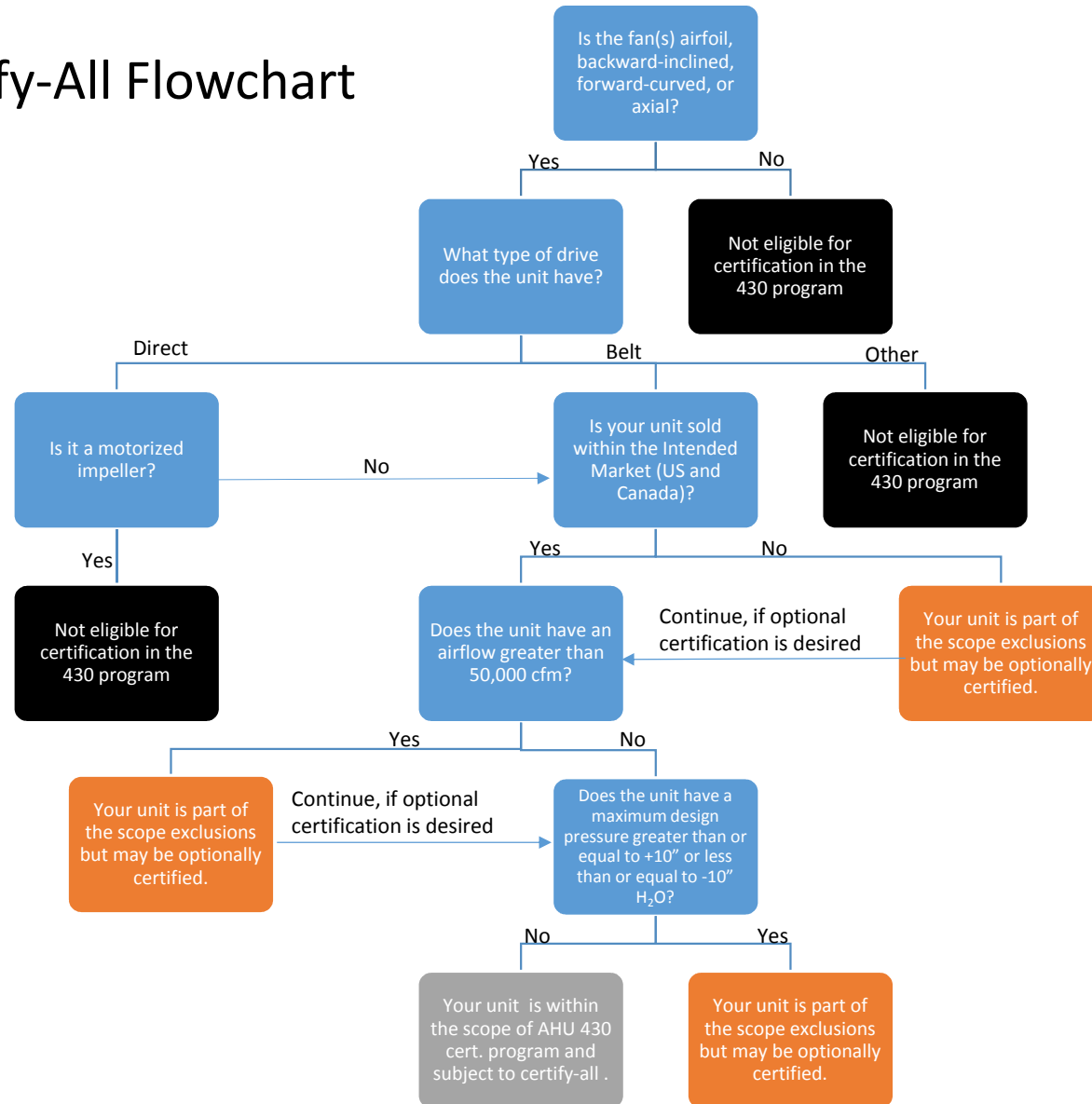


# AHU Certify-All Flowchart

AHU definition from PSOM: A factory-made encased assembly consisting of a fan or fans and other necessary equipment to perform one or more of the functions of circulating, cleaning, heating, cooling, humidifying, dehumidifying and mixing of air. It shall not contain a source of cooling or heating other than gas or electric heat. The AHU shall have a maximum design external static pressure (ESP) greater than 1.0 in H<sub>2</sub>O [0.25 kPa]. While the ESP for a specific application may be less than 1.0 in H<sub>2</sub>O, any units generally capable of delivering greater than 1.0 in H<sub>2</sub>O ESP shall be considered to be an AHU. This certification program applies to supply fan ratings for plenum fans in a cabinet with a full face opening axial discharge, fan arrays in a cabinet, housed centrifugal fans, and axial fans.



# Housed AHU Certify-All Flowchart



# Plenum AHU Certify-All Flowchart

