

OPERATIONS MANUAL

AIR-COOLED WATER-CHILLING PACKAGES USING THE VAPOR COMPRESSION CYCLE



AHRI ACCL OM – MAY 2023

2311 Wilson Blvd, Suite 400
Arlington, Virginia 22201
(703) 524-8800

Sponsored and administered by:



PREFACE

The following manual outlines the procedures and policies of the AHRI Air-Cooled Water-Chilling Packages Using the Vapor Compression Cycle (ACCL) Certification Program operated by the Air-Conditioning, Heating, and Refrigeration Institute (AHRI). This manual is to be used in conjunction with the AHRI General Operations Manual for AHRI Certification Programs. Where the AHRI General Operations Manual and this product-specific manual differ, this product-specific operations manual shall prevail.

The revision of this manual supersedes all previous revisions. The current edition of this manual, as well as the General Operations Manual, can be accessed through the AHRI website, www.ahrinet.org.

The AHRI ACCL Certification Program provides for independent verification of the performance of the manufacturer's stated equipment performance. Safety criteria are not within the scope of this program.

Participation in the program is voluntary. Any manufacturer, regardless of AHRI membership, may obtain approval of Program Ratings and use of the AHRI ACCL Certification Mark hereinafter referred to as the "Mark". The Mark is the Participant's public representation that the ratings of randomly selected units have been verified by an independent laboratory in accordance with test procedures prescribed by this operations manual. A Certification Agreement is executed between the manufacturer and AHRI specifying the conditions under which such Ratings and the Mark may be used. No manufacturer has the right to use Program Ratings or to state that their products have been tested in conformance with the procedures outlined in this Rating Procedure unless and until they have received written authority from AHRI to use the Mark as applied to the specific approved Program Ratings.

This Operations Manual has been prepared to assure that administration of the program is carried out in a uniform manner. It is an amplification of the license agreement signed by licensees and AHRI. General information, procedural details, and copies of forms are included in the guide. Provisions of the Operations Manual may be amended as provided in the Certification Agreements.

This certification program complies with requirements of the ISO/IEC Standard 17065:2012, *General Requirements for Bodies Operating Product Certification Systems*.

Note:

This manual supersedes the AHRI Air-Cooled Water-Chilling Packages Using the Vapor Compression Cycle Certification Program Operations Manual, January 2022.

CERTIFICATION OPERATIONS MANUAL FOR
AIR-COOLED WATER-CHILLING PACKAGES USING VAPOR COMPRESSION CYCLE

TABLE OF CONTENTS

SECTION	PAGE
1	Program Overview
1.1	Applicable Rating Standards.....1
1.2	Definitions1
1.2.1	Air-Cooled Water-Chilling Package1
1.2.2	Custom Unit1
1.2.2.1	Field Trial Unit.....1
1.2.3	New Product Introduction.....1
1.2.4	Modular Chiller Array2
1.2.5	Catalog / Selection Rating Application.....2
1.2.5.1	Catalog.....2
1.2.5.2	Selection Rating Application2
1.2.6	Published Ratings2
1.2.6.1	Primary Published Ratings2
1.2.6.2	Secondary Published Ratings.....2
1.3	Program Scope3
1.3.1	Optional Certification.....3
1.4	Basic Model Groups (BMGs)4
2	Qualification Process
2.1	Original Equipment Manufacturer (OEM) Applicants4
STEP 2.1.1	Certification Application Package5
STEP 2.1.2	Processing Application Package5
STEP 2.1.2.1	Performance Certification Agreement for Original Equipment Manufacturer (OEM Agreement)5
STEP 2.1.2.2	Participation and Licensing Fee Invoice5
STEP 2.1.3	Selection and Acquisition of Test Sample5
STEP 2.1.4	Qualification Testing5
STEP 2.1.4.1	Successful Completion of All Qualification Tests5
STEP 2.1.4.2	First Sample Qualification Test Failure5
STEP 2.1.4.3	Second Sample Qualification Test Failure.....6
STEP 2.1.5	Welcome to the Program6
2.2	Private Brand Marketer (PBM) Applicants6
STEP 2.2.1	Certification Application Package6
STEP 2.2.2	Processing Application Package6
STEP 2.2.2.1	Performance Certification Agreement for Private Brand Marketer (PBM Agreement)6
STEP 2.2.2.2	OEM Agreement on Behalf of the PBM Applicant6
STEP 2.2.2.3	Licensing Fee Invoice6
STEP 2.2.3	Welcome to the Program6
2.3	AHRI Certification to EN Standards6
STEP 2.3.1	AHRI Certification to EN Standards Application Package6
STEP 2.3.2	Processing Application Package6
STEP 2.3.2.1	Performance Certification Agreement for Original Equipment Manufacturer (OEM Agreement)6
STEP 2.3.3	Qualification Testing7
STEP 2.3.3.1	Successful Completion of Qualification Test7

	STEP 2.3.3.2	First Sample Qualification Test Failure	7
	STEP 2.3.3.3	Second Sample Qualification Test Failure.....	7
	STEP 2.3.4	Welcome to AHRI Certification to EN Standards	7

3 Equipment Selection and Testing

3.1	Annual Testing Requirement	7
3.2	Testing Standard.....	7
3.3	Location of Tests.....	7
3.4	Laboratory Testing	7
3.5	Test Stand Approval and Witness Testing.....	8
3.5.1	Test Stand Approval	8
3.5.1.1	Non-Compliant Inspection Results	8
3.5.1.2	Final Approval of Witness Test Stand.....	9
3.5.1.3	Maximum Approved Test Stand Capacity	9
3.5.2	Witness Testing	9
3.5.2.1	Advance Setup of Sample in the AHRI Approved Test Stand	9
3.5.2.2	Duty Assignments of Representative.....	9
3.5.2.3	Use of Laboratory Instrumentation	9
3.5.2.4	Laboratory Instrumentation.....	10
3.5.2.5	Air Temperature Measurement.....	11
3.5.2.6	Sample Start-Up and Operation	11
3.6	Selection of Test Samples and Test Timeframe	11
3.7	Primary Catalog / Selection Rating Application Requirements.....	12
3.7.1	Primary Catalog / Selection Rating Application Output Reports.....	12
3.7.2	Primary Catalog / Selection Rating Applications Approval	12
3.7.2.1	Initial Approval	13
3.7.2.2	Update Approval	13
3.7.3	Minimum Certified Data Required in Primary Catalog / Selection Rating Application	13
3.7.3.1	Water-Chilling Packages.....	13
3.7.4	Statements Regarding Certification – Certified Selections.....	13
3.7.4.1	Units in which Statements 3.7.4.2 and 3.7.4.3 Do Not Apply	13
3.7.4.2	Heat Pump Water-Heating Units Operating in Cooling.	13
3.7.4.3	Heat Recovery Units with Heat Reclaim Off.....	13
3.7.5	Statements Regarding Certification – Non-Certified Selections	14
3.7.5.1	Units in which Statements 3.7.5.2 through 3.7.5.5 Do Not Apply	14
3.7.5.2	Custom or Field Trial Units.	14
3.7.5.3	Non-Current Catalog or Selection Rating Application Version	14
3.7.5.4	New Product Introduction Units	14
3.7.5.5	Alternate Certification.....	14
3.7.6	Additional Statements Regarding Certification	14
3.7.6.1	Non-Standard Tolerances.....	14
3.7.6.2	Combined Units or Modular Chiller Array System Selections.	14
3.7.6.3	Units with an Evaporator which Contains Liquid for Freeze Protection.....	14
3.7.6.4	Units Certified In Accordance with EN Standards ..	15
3.7.7	Primary Catalog / Selection Rating Application Language	15
3.8	Tested and Certified Ratings	15
3.8.1	Tested Cooling Ratings.....	15

	3.8.1.1	AHRI Standards 550/590 (I-P) and 551/591 (SI) Ratings.....	15
	3.8.1.2	EN Standards 14511 and 14825 Ratings.....	16
3.8.2		Certified Cooling Ratings.....	16
	3.8.2.1	AHRI Standards 550/590 (I-P) and 551/591 (SI) Ratings.....	16
	3.8.2.2	EN Standards 14511 and 14825 Ratings.....	16
3.9		Test Failures.....	16
	3.9.1	Options Following First Sample Failure.....	16
	3.9.2	Options Following Second Sample Failure.....	17
	3.9.3	5th Point Failure Re-rate Procedure.....	17
	3.9.4	Re-rate Requirements for Water-Chilling Packages.....	18
	3.9.4.1	Involuntary Re-rate Confirmation.....	18
4		Challenge Tests.....	18
5		AHRI Directory of Certified Product Ratings	
	5.1	Publication of Certified Products or New Product Introduction Directories.....	18
	5.2	Data Forms.....	19
	5.3	Publication of Approved Test Stands in the Directory.....	19
6		Assessment and Payment of Certification Fees	
	6.1	Equipment Delivery/Disposal Fees.....	20
7		Issuance of Violations and/or Terminations	
	7.1	Program Violation.....	20
	7.1.1	Program Violation Letter.....	20
	7.1.2	Accumulation of Program Violations.....	22
8		Program Hierarchy, Complaints, and the Appeals Process.....	22
9		Proper Use of the AHRI Certification Mark and Claims to Certification	
	9.1	AHRI Verification and Validation of Published Ratings.....	22
	9.1.1	Published Primary Rating Verification.....	22
	9.1.2	Published Rating Validation.....	23
	9.1.3	Responsibility of Participant for Primary Catalog / Selection Rating Application Revisions.....	23
	9.2	Changes to Directory Listings.....	23
10		Test Stand Availability Requirements	
	10.1	Purpose.....	24
	10.2	Definitions.....	24
	10.2.1	Test Stand Provider.....	24
	10.2.2	Test Stand User.....	24
	10.3	Requirements.....	24
	10.3.1	AHRI.....	24
	10.3.2	Test Stand Provider.....	24
	10.3.3	Test Stand User.....	24

Appendices

Appendix A	Certification of Air-Cooled Water-Chilling Packages for 2019-2021	26
Appendix B	Examples	28
Appendix C	Certification Statement Flowchart	30
Appendix D	Statements Regarding Certification – Mandarin Chinese	31

Tables

Table 1	Program Scope.....	4
Table 2	Instrumentation Requirements	11
Table 3	Publication of Ratings in the Certified Products and New Product Introduction Directories.....	19
Table 4	Publication of Approved Test Stands in the Test Stand Directory	20
Table 5	Program Violation Level Types and Examples	21
Table 6	Consequences of Program Violation Accumulation	22
Table A1	ACCL Part-load Operating Map Boundaries for 2019	26
Table A2	ACCL Part-load Operating Map Boundaries for 2019	26
Table A3	ACCL Part-load Operating Map Boundaries for 2020	26
Table A4	ACCL Part-load Operating Map Boundaries for 2020	26
Table A5	ACCL Part-load Operating Map Boundaries for 2021	27
Table A6	ACCL Part-load Operating Map Boundaries for 2021	27
Table B1	Standard Rating Conditions.....	28
Table B2	5 th Point Rating Conditions	29

Figures

Figure A1	ACCL Part-load Operating Map for 2019	26
Figure A2	ACCL Program Scope for the 2020 Program Year	27
Figure A3	ACCL Program Scope for the 2021 Program Year	27
Figure B1	Example of 5 th Point Re-rate	29

Documents Referenced which are only Available Online (www.ahrinet.org)

ACCL-DS1 - Data Submittal Form	
ACCL-DS2 - Testing Workbook	
ACCL-FA1 - Application for Test Stand Approval	
ACCL-FA2 - Personnel Experience Questionnaire	
ACCL-FA3 - Test Stand and Equipment Questionnaire	
ACCL-FA4 - Calibration Summary	
ACCL-PC1 - Witness Test Procedure and Checklist	
ACCL-PC2 - In-House Test Procedure and Checklist	
ACCL-PC3 - Air Distribution Procedure and Checklist	
ACCL-PC4 - Test Stand Approval Procedure and Checklist	
ACCL-PC5 - Third-Party Laboratory Procedure and Checklist for Witness Testing	
ACCL-PC6 - Third-Party Laboratory Procedure and Checklist for In-house Testing	
ACCL-PC7 - Test Stand Approval Procedure and Checklist of Third-Party Laboratory	
AHRI Standard 550/590 & 551/591 System Calibration Worksheet	
ACCL Minimum Requirement Catalog Template	

1. Program Overview

1.1 Applicable Rating Standards. It is mandatory for program Participants to comply with the provisions of either AHRI Standard 550/590-2023 (I-P), *Performance Rating of Water-Chilling and Heat Pump Water-Heating Packages Using the Vapor Compression Cycle* (Standard), or AHRI Standard 551/591-2023 (SI), *Performance Rating of Water-Chilling and Heat Pump Water-Heating Packages Using the Vapor Compression Cycle* (Standard).

Participants electing to optionally certify to EN Standards are required to comply with the provisions of EN Standard 14511:2022, *Air conditioners, liquid chilling packages and heat pumps for space heating and cooling and process chillers, with electrically driven compressors*, and EN Standard 14825:2022, *Air conditioners, liquid chilling packages and heat pumps, with electrically driven compressors, for space heating and cooling, commercial and process cooling - Testing and rating at part load conditions and calculation of seasonal performance*.

Unless otherwise noted Standard refers to AHRI Standards 550/590 (I-P) or 551/591 (SI).

1.2 Definitions. All terms in this document shall follow the AHRI GOM and the Standard definitions unless otherwise defined in this section.

1.2.1 Air-Cooled Water-Chilling Package. A factory-made and prefabricated assembly (not necessarily shipped as one package) of one (1) or more compressors, condensers and evaporators, with interconnections and accessories including controls, designed for the purpose of cooling water. It is a machine specifically designed to make use of a vapor compression refrigeration cycle to transfer heat from a cold water liquid circulating system to the air.

1.2.2 Custom Unit. A unit that is not specifically listed in a publicly available sales brochure, magazine advertisement, website posting or Catalog / Selection Rating Application that is a single instance product which contains components or additions that change the performance such that ratings cannot be obtained by utilizing the Participant's Catalog / Selection Rating Application. All published performance for a Custom Unit is subject to the requirements of Section 3.7.5.2.

Custom Units shall not be certified and shall not be listed in the AHRI Directory of Certified Product Performance (Directory).

1.2.2.1 Field Trial Unit. A unit that is produced and provided to a customer, for the purpose of gathering data on potential new products. These units are intended to transition into regular production should the field trial be successful. Field Trial Units are subject to the requirements of Custom Units. Field Trial Units shall not be certified and shall not be listed in the Directory.

1.2.3 New Product Introduction Unit. A new product is one that falls under the Program Scope that is available to be marketed but is not available for standard production and is not listed in the Directory. Prior to advertising a New Product Introduction Unit, the Participant must obtain approval from AHRI by providing the following:

- Documentation describing the pre-released product.
- Capacity and efficiency at AHRI Standard Rating Conditions for a representative sample of the pre-released product.
- An updated ACCL-DS1 form.

Within nine (9) months after AHRI has approved the New Product Introduction Unit, the Participant shall add the New Product Introduction Unit to the Directory in accordance with Section 9.2, or else be in violation of AHRI's Certify-All Policy. AHRI reserves the right to modify annual testing selections to include new product introduction.

New Product Introduction listings shall be shown on the ACCL Certification Program website until they are added to the Directory.

All published performance for a New Product Introduction is subject to the requirements of Section 3.7.5.4.

1.2.4 Modular Chiller Array. A combination of individual certified chillers that may or may not include, from the factory, all required piping, wiring and controls to make the modular chiller array complete. The Modular Chiller Array is not certified, per Section 3.7.6.2, similar to when other certified chillers are piped and controlled together in the field.

1.2.5 Catalog / Selection Rating Application. A catalog or selection rating application that allows for selection of any certified product at any published application rating condition per the Standard, and shall be in one of the following forms:

1.2.5.1 Catalog. Any published material capable of displaying previously generated (i.e., static) performance data.

- Paper Catalog – a printed display of product performance
- Electronic Catalog or Spreadsheet – an electronic display of product performance
- Mobile Catalog – a downloadable program capable of displaying performance on one or more mobile device

1.2.5.2 Selection Rating Application. Any application capable of generating (i.e., calculating) performance data.

- PC based Selection Rating Software - a personal computer (PC) based, run on MS Windows® based platform;
- Web based Application - all the applications that communicate with the user via HTTP; and
- Mobile Application – a downloadable program capable of generating performance on one or more mobile device.

1.2.6 Published Ratings. All published ratings of certified products which fall within the scope of the Program shall match the ratings generated using the Participant's Primary Catalog / Selection Rating Application listed in the AHRI Directory at the time of publication.

1.2.6.1 Primary Published Ratings. Ratings published using the Participant's Primary Catalog / Selection Rating Application listed in the AHRI Directory at the time of publication.

1.2.6.2 Secondary Published Ratings. Ratings published using media other than the Participant's Primary Catalog / Selection Rating Application listed in the AHRI Directory at the time of publication. All Secondary Published Ratings shall be generated using the Participant's Primary Catalog / Selection Rating Application listed in the AHRI Directory at the time of publication.

Secondary Published Ratings shown in a Catalog / Selection Rating Application shall reference the Primary Catalog / Selection Rating Application used to generate the certified performance with the following:

- Primary Catalog / Application name; and
- Primary Catalog / Application Issue Date/Code.

1.3 Program Scope. This program applies to electric motor driven Air-Cooled Water-Chilling Packages, as defined in Section 1.2, and that meet the criteria of Table 1, and as follows.

1.3.1 Optional Certification. If Participants certify units within the optional certification scope of the program as defined in Table 1, the following requirements apply:

- Any product that falls within the classifications of a Participant's public AHRI Directory listing must be certified.
- If a Participant chooses to optionally not certify a product based on criteria that is not listed in the AHRI Directory, the non-certified product shall carry a different Model Designation from the AHRI certified product.
- If a Participant manufactures the same product in multiple countries, and the product is optionally not certified from one or more countries of origin, country of origin must be listed on the Primary Catalog / Selection Rating Application Output Report.
- All units certified by AHRI to EN Standards shall also be certified to AHRI Standards.

Refer to Appendix B for example cases pertaining to optional certification.

Table 1. Program Scope

Intended Market	Electrical Connection		Cooling Capacity ^a , tons [kW] ^b	Heat Rejection Capacity ^a , Btu/h [kW] ^b	Published Ratings in Accordance With the Referenced Standard ^c	
	(Hz)	(V)			AHRI	EN
Air-Cooled Water-Chilling Packages						
Sold for use outside of the U.S. and Canada	50	≤600	>0 and ≤600 [2,110]	Heating Performance	AHRI 550/590 (I-P) or 551/591 (SI)	EN 14511 and EN 14825
	60					
Sold for use inside the U.S. and Canada	50	≤600	>0 and ≤600 [2,110]	Heating Performance	AHRI 550/590 (I-P) or 551/591 (SI)	EN 14511 and EN 14825
	60					
Heat Pump Water-Heating Packages						
Sold for use anywhere in the world	50	≤600	>0 and ≤600 [2,110]	Heating Performance	AHRI 550/590 (I-P) or 551/591 (SI)	EN 14511 and EN 14825
	60					
Heat Recovery Water-Heating Packages						
Sold for use anywhere in the world	50	≤600	>0 and ≤600 [2,110]	Heating Performance	AHRI 550/590 (I-P) or 551/591 (SI)	EN 14511 and EN 14825
	60					
Custom Units						
Condenserless chillers						
Split system chillers						
Evaporatively-cooled chillers						
Chillers with motors not supplied with the unit by the Participant						
Units with evaporators that use liquid other than fresh water^d						
Notes:					Legend:	
a. Cooling Capacity refers to the net cooling capacity of units rated at application full-load operating conditions provided these conditions are within the scope of AHRI Standard 550/590 (I-P).					Required for Participants to Certify	Optional for Participants to Certify
b. kW conversions provided for reference only.						
c. Applies to all Published Ratings within the scope of AHRI Standard 550/590 (I-P).						
d. Units containing freeze protection liquids in the evaporator are within scope when rated per the Standard with water.						
					Excluded from the Program Scope	

1.4 **Basic Model Groups (BMGs).** A BMG is defined as a family of chillers using the same compressor type. A Participant may choose to further subdivide its products into additional BMGs.

2. Qualification Process

2.1 **Original Equipment Manufacturer (OEM) Applicants.** With the additions noted below, the OEM qualification process shall proceed according to the AHRI General Operations Manual, Section 4.

STEP 2.1.1 Certification Application Package. In addition to the Application for AHRI Certification, New Applicant License Fee Form – Sales Volume, and product-specific ratings and data, noted in the AHRI General Operations Manual, Section 4, STEP 4.1, Applicants shall submit the following documentation to AHRI:

- One test report for each BMG;
- Copy of Applicant’s Primary Catalog / Selection Rating Application (refer to Section 3.7); and
- If the Applicant chooses to conduct witness testing at its AHRI Approved Test Stand (Test Stand), all required forms per Section 3.5.1 of this manual for Test Stand Approval shall also be submitted.

STEP 2.1.2 Processing Application Package.

STEP 2.1.2.1 Performance Certification Agreement for Original Equipment Manufacturer (OEM Agreement). No further action required beyond that listed in Section 4, STEP 4.2 of the AHRI General Operations Manual.

STEP 2.1.2.2 Participation and License Fee Invoice. Payment of the Participation and License Fee is due within 30 calendar days of the invoice issue date. Testing shall not be conducted until the invoice is paid in full. No further action is required beyond that listed in Section 4, STEP 4.2 of the AHRI General Operations Manual.

STEP 2.1.3 Selection and Acquisition of Test Samples. Refer to Section 3 for requirements of selection and acquisition of test samples.

STEP 2.1.4 Qualification Testing. AHRI shall supply the Laboratory with the Published Ratings. The Laboratory shall conduct the testing of the samples in accordance with the Standard, against the Published Ratings.

The Applicant may prepare the equipment for test in the Laboratory or their approved Test Stand, validate the setup for the operation of the equipment prior to conducting the test(s), and witness the testing. The Applicant may not interfere with the equipment once testing has begun.

STEP 2.1.4.1 Successful Completion of All Qualification Tests. If all qualification tests pass, proceed to STEP 2.1.5.

STEP 2.1.4.2 First Sample Qualification Test Failure. An Applicant is required to pass at least 80% of the first sample qualification tests. Should the pass rate be less than 80%:

- The Applicant shall test additional BMGs until the pass rate of the first sample qualification tests is at least 80%, or until all BMGs are tested; or
- The Applicant may choose to re-rate all models within untested BMGs per Section 3.9.4. (for all 5th Point test failures with the exception of Water Pressure Drop refer to Section 3.9.3);

Except as noted below, refer to Section 4, STEP 4.4.2 of the AHRI General Operations Manual for details regarding the first sample qualification failure options.

- Test a second sample from the same BMG (sample must be available for witness testing or ship to the Laboratory for testing within 90 calendar days following notification of failure).

STEP 2.1.4.3 Second Sample Qualification Test Failure. Refer to Section 4, STEP 4.4.3 of the AHRI General Operations Manual for details regarding the second sample qualification failure options.

STEP 2.1.5 Welcome to the Program. No further action required beyond that listed in Section 4, STEP 4.5 of the AHRI General Operations Manual.

2.2 Private Brand Marketer (PBM) Applicants. With the additions noted below, the PBM qualification process shall proceed according to the AHRI General Operations Manual, Section 5.

PBM Applicants are not required to undergo witness Test Stand inspection or initial qualification testing. PBM product certification is contingent upon the certification of the associated OEM product. PBM Published Ratings must directly correlate to OEM Published Ratings. If the Published Ratings have variations, the PBM must register and test as an OEM.

STEP 2.2.1 Certification Application Package. In addition to the Application for AHRI Certification and product-specific ratings and data noted in the AHRI General Operations Manual, Section 5, STEP 1, Applicants shall submit the following:

- Copy of Applicant's Catalog / Selection Rating Application (refer to Section 3.7);

STEP 2.2.2 Processing Application Package.

STEP 2.2.2.1 Performance Certification Agreement for Private Brand Marketer (PBM Agreement). No further action required beyond that listed in Section 5, STEP 5.2.1 of the AHRI General Operations Manual.

STEP 2.2.2.2 OEM Agreement on Behalf of the PBM Applicant. No further action required beyond that listed in Section 5, STEP 5.2.2 of the AHRI General Operations Manual.

STEP 2.2.2.3 Licensing Fee Invoice. Payment of the Licensing Fee is due within 30 calendar days of the invoice issue date.

STEP 2.2.3 Welcome to the Program. No further action required beyond that listed in Section 5, STEP 5.3 of the AHRI General Operations Manual.

2.3 AHRI Certification to EN Standards. The following steps are required for a Participant without any products claiming AHRI Certification to EN Standards. Once qualified, requirements to add, modify or remove certified products to EN Standards shall follow Section 9.2.

STEP 2.3.1 AHRI Certification to EN Standards Application Package. Participant shall submit the following documentation to AHRI:

- An updated ACCL-DS1 form showing the exact model(s) to claim AHRI Certification to EN Standards; and
- Copy of Participant's Primary Catalog / Selection Rating Application (refer to Section 3.7).

STEP 2.3.2 Processing Application Package.

STEP 2.3.2.1 Performance Certification Agreement for Original Equipment Manufacturer (OEM Agreement). The Participant will receive an updated Certification Agreement with modifications to comply with requirements for products to be certified to the EN Standards and the requirements of Section 4, STEP 4.2 of the AHRI General Operations Manual.

STEP 2.3.3 Qualification Testing. AHRI shall supply the Laboratory with the Published Ratings to the EN Standards. The Laboratory shall conduct the testing of the samples in accordance with the EN Standards, against the Published Ratings.

STEP 2.3.3.1 Successful Completion of Qualification Test. If all qualification tests pass, proceed to STEP 2.3.4.

STEP 2.3.3.2 First Sample Qualification Test Failure. Refer to Section 3.9.1.

STEP 2.3.3.3 Second Sample Qualification Test Failure. Refer to Section 3.9.2.

STEP 2.3.4 Welcome to AHRI Certification to EN Standards. After all steps have been completed, the Participant shall be sent a welcome letter granting rights to use the AHRI Certification Mark for certification of products to EN Standards and the Participant's certified products to EN Standards shall be listed in the AHRI Directory of Certified Product Performance (Directory).

3. Equipment Selection and Testing

3.1 Annual Testing Requirement. 20% of a Participant's BMGs shall be tested, with a minimum of one (1) test per country of origin (country where unit is originally assembled). Fractional models shall be rounded to the nearest whole number using traditional rounding methods. The minimum number of annual tests shall be one (1) for Participants with only one (1) BMG from one (1) country of origin and two (2) for Participants with more than one (1) BMG from more than one (1) country of origin. Countries where samples are only reassembled shall not be considered as a location of origin.

3.2 Testing Standard. Each test shall be conducted in accordance with either AHRI or EN Standards as follows:

- All units may be tested in accordance with AHRI Standards 550/590 (I-P) or 551/591 (SI).
- Units that are optionally certified to EN Standards 14511 and 14825 may be tested accordingly.

Testing to either AHRI or EN Standards satisfies the testing requirements of this Program which certifies the performance of products in accordance with AHRI Standards 550/590 (I-P) and 551/591 (SI) and (optionally) EN Standards 14511 and 14825.

Units optionally certified to EN Standards 14511 and 14825 shall first be qualified per Section 2.3.

For tests conducted in accordance with AHRI Standards 550/590 (I-P) or 551/591 (SI), uncertainty analysis per ANSI/ASHRAE Standard 30-2019 Section 6.7.3 is recommended but not required.

3.3 Location of Tests. The Participant shall elect to conduct testing at the AHRI Contracted 3rd Party test facility (Laboratory) or at a Participant's AHRI Approved test stand (Test Stand). All tests, regardless of location, shall be setup and tested in accordance with the Participant's installation and operation instructions in printed or electronic format, and conducted or witnessed by the Representative Contracted by AHRI (Representative).

3.4 Laboratory Testing. Selected samples must be shipped to the Laboratory accompanied by the Participant's published installation instructions in printed or electronic format. Instructions shall provide sufficient information to test the sample in accordance with the Standard. Participants shall provide AHRI with a list of contacts available in case the Laboratory has an issue with testing and needs direction. The Participant shall respond within two (2) hours of initial contact, otherwise the sample shall be removed from the test cell. If additional information is required during testing, it shall be approved by AHRI prior to its use.

A Participant may be allowed in the Laboratory for the duration of the test to assist in the setup of the sample and operation of each test point using the tools and diagnostic equipment typically available in the field for this purpose. A Participant may instruct the Laboratory to operate the equipment in accordance with instructions provided per Section 3.6 for a Participant-specified number of test setup validation hours, not to exceed 4 hours of run time at stable Participant defined conditions, prior to testing.

All costs for the set-up and start-up in addition to those required for standard setup of the samples shall be borne by the Participant.

Testing shall be conducted, and test reports shall be generated by entering all required data into the ACCL-DS2 Testing Workbook.

3.5 Test Stand Approval and Witness Testing. This Program allows witness testing, where Participant personnel, witnessed by a Representative, conduct testing at an AHRI approved Test Stand. Witness testing requirements are covered in the AHRI General Operations Manual, Section 9 and as specified below.

3.5.1 Test Stand Approval. The Participant shall submit the following to AHRI to schedule a Test Stand inspection for AHRI approval:

- Test Stand Approval (FA) Forms (found online at www.ahrinet.org);
- A completed AHRI Standard 550/590 & 551/591 System Calibration Worksheet (found online at www.ahrinet.org) with a copy of each calibration report showing date of last calibration;
- A schematic drawing of the area of the Test Stand in which AHRI certification testing shall be performed;
- Drawings of Air Sampling Tree (refer to ANSI/ASHRAE 30 for an example);
- Schematic drawing or photographs of placement of Air Sampling Trees for each condenser coil configuration to be tested, with consideration to the range of sizes to be tested; and
- Photographs of the Test Stand in which AHRI certification testing will take place (which shall include sufficient views to show the location and connection of each instrument as well as the location and connection of the ports to be used by the Laboratory during witness testing).

Following review and approval of the submitted data, AHRI shall forward the application package to the Representative. The Representative shall then complete applicable portions of Form ACCL-PC4, Test Stand Approval Procedure and Checklist to determine whether the Test Stand shall be granted preliminary approval (found online at www.ahrinet.org).

Once the Test Stand has been granted preliminary approval, the Representative shall make arrangements for the Test Stand inspection to verify compliance of the data submitted to the certification program and complete the remaining sections of Form ACCL-PC4. A chiller must be running in the Test Stand for the inspection to be completed.

If the Test Stand Inspection is not conducted in conjunction with an AHRI Certification Test, then the chiller shall be run at 100% and 25% IPLV conditions in accordance with the Standard and data shall be collected to verify Test Stand capabilities. Units that are not able to operate at Standard Rating Conditions shall be tested at 100% and 25% NPLV conditions.

3.5.1.1 Non-Compliant Inspection Results. If the results of the inspection indicate that a Participant's Test Stand is non-compliant with the Standard or the certification program, all discrepancies must be resolved and resubmitted to AHRI before approval may be granted to proceed with AHRI tests.

3.5.1.2 Final Approval of Witness Test Stand. Upon acceptable results of the inspection, AHRI shall notify the Participant in writing, of final acceptance and approval to proceed with certified rating tests. Testing may be scheduled in conjunction with Test Stand inspection; however, should the Test Stand fail inspection, the testing shall be delayed until the Test Stand is brought into compliance. All approved Test Stands shall be listed in the Test Stand Directory as defined in Table 4.

Previously approved Test Stands may optionally renew the Test Stand up to ninety (90) calendar days prior to the Test Stand expiration date. If the Test Stand is approved during this period, the Test Stand shall be approved for two (2) years from the Test Stand previously established expiration date.

3.5.1.3 Maximum Approved Test Stand Capacity. AHRI will determine the Maximum Approved Test Stand Capacity as the minimum of the following values:

- Tested Full Load Capacity divided by 0.85;
- Declared Maximum Capacity (Operating Range of Test Stand) on Form ACCL-FA3; or
- Program Scope limit per Table 1 (600 tons or 2,110 kW).

Note: If the tested full load capacity divided by 0.85 exceeds the declared maximum capacity, the Participant has the option to revise Form ACCL-FA3.

The Maximum Approved Test Stand Capacity will be valid for six (6) years, contingent upon the Test Stand remaining continuously approved during that period. If the Test Stand approval expires, the Maximum Approved Test Stand Capacity will also expire and will be recalculated following the next inspection.

3.5.2 Witness Testing.

3.5.2.1 Advance Setup of Sample in the AHRI Approved Test Stand. A Participant may set up the test sample in the Test Stand prior to the arrival of the Representative. The Representative shall complete Form ACCL-PC1, Witness Test Procedure and Checklist and Form ACCL-PC3, ACCL Air Distribution Procedure and Checklist in conjunction with conducting the witness test. Prior to test commencement, the Representative shall verify that the unit is the model selected by AHRI for testing and that the sample has been set up in the Test Stand in accordance with the Participant's published installation instructions in printed or electronic format and referenced method of test (PC forms may be found online at www.ahrinet.org).

3.5.2.2 Duty Assignments of Representative. Sample testing, data acquisition, and data reduction shall be performed by the Participant and assisted and witnessed by the Representative. Testing shall be conducted and test reports shall be generated by entering all required data into the ACCL-DS2 Testing Workbook. The Participant shall provide raw test data to the Representative in a form easily transferable to the ACCL-DS2 Testing Workbook. Participant or Test Stand personnel shall be on-hand to assist the Representative as requested and are permitted to be present but are not permitted to tamper or adjust samples during tests, unless specifically requested by the Representative responsible for the test.

Verification of instrument application (in accordance with the procedures defined in the Standard) and verification of calibrations shall be performed by the Representative.

3.5.2.3 Use of Laboratory Instrumentation. The Representative shall use primary test instruments belonging to the Laboratory in line with those provided by the Participant to measure power input, water pressure drop, and air and water

temperatures in accordance with the Standard. Readings shall be taken from both devices. The test results from the Participant data acquisition system shall be used provided that:

- The Participant equipment is under current calibration;
- All data acquisition is in accordance with the Standard.
- The Participant's power input measurement does not differ by more than 2% of the average between the Laboratory's and Participant's measurements;
- Water temperature at each location does not differ by more than 0.2°F (0.11°C);
- Water temperature difference across the evaporator as determined by the average of the two sets of Participant instrumentation does not differ by more than 0.2°F (0.11°C);
- Air temperature entering the condenser does not differ by more than 0.3°F (0.17°C);
- Water pressure drop does not differ by more than 0.5 ft H₂O (1.5 kPa); and
- The Participant's barometric pressure measurement does not differ by more than 1.0% of the average between the Laboratory's and Participant's measurements.

The Representative shall verify that the Test Stand average test conditions remain within the allowable tolerances for the duration of the test time period within 30 seconds of test start and stop, by comparing the Representative's test results with the Participant's test results.

Should any of these criteria not be met, steps should be taken to ensure that the discrepancy is resolved. In cases where the discrepancy cannot be resolved and no damage is apparent, the Laboratory instrumentation data for that parameter shall be used. If the instrument is part of a pair to calculate a difference (e.g. temperature or pressure) or part of an instrument set to calculate an average (e.g. ambient air temperature or power) then the Laboratory instrumentation data shall be used for both instruments in the pair or all instruments in the instrument set.

3.5.2.4 Laboratory Instrumentation. Selected measurements require redundant instrumentation due to the fact that a heat balance cannot be obtained. Refer to Table 2 for instrumentation requirements.

Table 2. Instrumentation Requirements			
Measurement	Test Stand Instrument Requirements	Additional Accommodations for Laboratory Instrumentation	Additional Verifications
Water Flow	two flow meters	(none)	(none)
Water Pressure Drop	one gauge or transducer	one additional pair of 1/8 inch NPT ports that connect to the same static pressure ports used by the Test Stand	(none)
Water Temperature	two temperature sensors at each temperature location	additional thermowell at each temperature location to accept a 1/4 inch probe with immersion depth of 1/3 to 1/2 the diameter of the pipe	(none)
Air Temperature	one temperature sensor in each Aspirating Psychrometer	additional temperature port in each Aspirating Psychrometer (see ANSI/ASHRAE 30)	(none)
Air Temperature (secondary)	one thermopile grid per air sampling tree	(none)	all thermopiles to be within range of 0.50°F [0.28°C] at ambient, prior to test
Electrical Power	two electrical power measurement devices	location to clamp on current measurement device and taps for voltage measurement	(none)
Note: All instruments shall be under current calibration that is traceable to NIST or equivalent laboratories that participate in inter-laboratory audits.			

3.5.2.5 ***Air Temperature Measurement:*** Participant's Test Stand shall utilize sampling tube assembly(s) to ensure air mixing and avoidance of stratification. Refer to ANSI/ASHRAE 30.

3.5.2.6 ***Sample Start-Up and Operation.*** Start-up and operation of the sample shall be in accordance with the Participant's installation and operation instructions in printed or electronic format.

3.6 ***Selection of Test Samples and Test Timeframe.*** AHRI shall make a Scheduled Production Model Selection based on the Participant's Primary Catalog / Selection Rating Application version as listed in the Directory.

The Participant's AHRI approved Primary Catalog / Selection Rating Application shall be used to select a sample to operate within the limits of rating conditions per the Standard. Refer to Section 9 of the AHRI General Operations Manual.

The following timeline applies:

- At least ninety (90) calendar days before the first scheduled test date, AHRI shall notify the Participant of the Annual Testing Requirement (by manufacturing location), selected BMG for each test, scheduled test date, and the assigned Laboratory for each test.
- At least forty-five (45) calendar days before the scheduled test date, the Participant shall:
 - Provide AHRI with a list of available models for selection within the selected BMG. Alternate BMGs may be selected based on product availability. If a BMG is not available

- for selection for three (3) consecutive years, the BMG shall be removed from the Directory and classified as Custom Units; and
- Coordinate test date(s) with the Laboratory.
- At least thirty (30) calendar days before the scheduled test date, AHRI shall notify the Participant of the selected model, testing standard (AHRI or EN), and random operating point (if applicable).
- Within seven (7) calendar days after notification of selected sample for testing, the Participant shall provide the following:
 - Notify AHRI if any of the selected units cannot be made available;
 - For Laboratory testing: Notify AHRI if the Participant is interested in having a representative present during the setup, startup and testing of the sample(s). If notification is not received within the specified time frame, the Participant will not be permitted to observe the setup, startup or testing of the sample(s);
 - Participant's Primary Catalog / Selection Rating Application Output Report(s) and a completed ACCL-DS2 Testing Workbook. Test conditions shall be provided per Section 5 of the Standard; and
 - Confirmation of the test location at the Laboratory or AHRI approved Test Stand.
- On or before the scheduled test date, the selected samples shall be shipped to the Laboratory or be available for Witness Testing at the AHRI approved Test Stand with refrigerant charging instructions as well as instructions that provide sufficient information to operate the selected unit at each test condition (i.e., manual operation of compressors and fans, etc.). If additional information is required during testing, it shall be approved by AHRI prior to its use.

3.7 Primary Catalog / Selection Rating Application Requirements. A Participant shall provide AHRI with the most up to date version of its Primary Catalog(s) (if applicable) or Primary Selection Rating Application(s) (including all necessary instructions and passwords required for access and updates), which complies with the following requirements:

If the Participant has more than one (1) Primary Catalog / Selection Rating Application available to users, each shall be provided to AHRI for review and approval per Section 3.7.2.

3.7.1 Primary Catalog / Selection Rating Application Output Reports. Primary Catalogs and Selection Rating Application Output Reports may be printed or electronic from PC based applications or screen captures from mobile applications and shall include the minimum information required by Section 6.2 of the Standard to allow AHRI to generate identical certified performance in addition to the following:

- Manufacturer name;
- Certified performance (Refer to Section 3.8);
- Proper Statements Regarding Certification (Refer to Sections 3.7.4, 3.7.5, 3.7.6); and
- Each Primary Selection Rating Application Output Report page shall contain the following:
 - Application name and version;
 - Reference page number (example: 1 of 2); and
 - Date each output sheet is generated.
- Each Primary Catalog page shall contain the following:
 - Catalog name and version; and
 - Date catalog was created.

3.7.2 Primary Catalog / Selection Rating Applications Approval. Per the AHRI General Operations Manual, Section 17, AHRI shall have an updated copy of any Primary Catalog/ Selection Rating Application being used in the field to produce Primary Published Ratings.

3.7.2.1 Initial Approval. If the participant is using a Catalog, PC based Selection Rating Software, or Mobile Application, AHRI shall provide the Participant with a login/password to a personalized Virtual Machine (VM) to install their Primary Catalog/Selection Rating Application. For Web based Applications, the Participant shall provide AHRI with access.

3.7.2.2 Update Approval. Any updates shall promptly be provided to AHRI via installation to the Participant's VM or notification of Web based Application updates.

Once the Participant notifies AHRI that the Selection Rating Application is ready for review, AHRI shall grant approval of updates to the Primary Catalog / Selection Rating Application within seven (7) calendar days.

3.7.3 Minimum Certified Data Required in Primary Catalog / Selection Rating Application. All published AHRI Certified Data shall be included in a Participant's Primary Catalog / Selection Rating Application. Publishing additional Certified Data not included in a Participant's Primary Catalog / Selection Rating Application shall result in a Program Violation. An ACCL Minimum Requirement Catalog Template may be found online at www.ahrinet.org.

3.7.3.1 Water-Chilling Packages. At a minimum, Primary Catalog / Selection Rating Applications shall provide data in accordance with Table 5 of the Standard or within the operational limits of each unit for full and part load ratings from 100% to 25% (or lowest stage of cooling capacity for units with discrete unloading) and IPLV or NPLV.

3.7.4 Statements Regarding Certification – Certified Selections. All Primary Catalogs and Primary Selection Rating Application output reports for certified selections which reference AHRI shall include one (1) of the statements shown in Sections 3.7.4.1 through 3.7.4.3.

The AHRI Certified Mark shall be included on all certified performance Primary Catalog and Selection Rating Application Reports.

Regardless of reference to AHRI, all units remain subject to the scope requirements of the Program, and all AHRI Certified Performance shall be accessible from an approved Selection Rating Application on an output sheet which references AHRI.

Appendix C contains a certification statement flowchart summarizing sections 3.7.4 through 3.7.6.

3.7.4.1 Units in which Statements 3.7.4.2 and 3.7.4.3 Do Not Apply. "Certified in accordance with the AHRI Air-Cooled Water-Chilling Packages Certification Program, which is based on AHRI Standard 550/590 (I-P) and AHRI Standard 551/591 (SI). Certified units may be found in the AHRI Directory at www.ahridirectory.org"

3.7.4.2 Heat Pump Water-Heating Units Operating in Cooling. "Certified in accordance with the AHRI Air-Cooled Water-Chilling Packages Certification Program, which is based on AHRI Standard 550/590 (I-P) and AHRI Standard 551/591 (SI). Heat Pump Water-Heating unit is certified when operating in cooling. Certified units may be found in the AHRI Directory at www.ahridirectory.org."

3.7.4.3 Heat Reclaim Units with Heat Reclaim Off. "Certified in accordance with the AHRI Air-Cooled Water-Chilling Packages Certification Program, which is based on AHRI Standard 550/590 (I-P) and AHRI Standard 551/591 (SI). Heat Reclaim unit is certified when operating with heat reclaim off. Certified units may be found in the AHRI Directory at www.ahridirectory.org."

3.7.5 Statements Regarding Certification – Non-Certified Selections. All Primary Catalogs and Primary Selection Rating Application outputs for non-certified selections which reference AHRI and are within the scope of the Standard shall include one (1) of the statements shown in Sections 3.7.5.1 through 3.7.5.4. For application ratings outside the scope of the Standard, refer to Section 6.1 of the Standard. Refer to Section 3.7.5.5 for Primary Catalogs and Primary Selection Rating Application outputs which include performance which is rated or certified by an organization other than AHRI.

The AHRI Certified Mark shall not be included on non-certified Primary Catalogs and Primary Selection Rating Application outputs.

3.7.5.1 Units in which Statements 3.7.5.2 through 3.7.5.5 Do Not Apply. “Outside the scope of AHRI Air-Cooled Water-Chilling Packages Certification Program or not optionally certified, but is rated in accordance with AHRI Standard 550/590 (I-P) and AHRI Standard 551/591 (SI).”

3.7.5.2 Custom or Field Trial Units. “Custom Unit which is not certified in accordance with AHRI Air-Cooled Water-Chilling Packages Certification Program, but is rated in accordance with AHRI Standard 550/590 (I-P) and AHRI Standard 551/591 (SI).”

3.7.5.3 Non-Current Catalog or Selection Rating Application Version. “Non-Current Selection which is not certified in accordance with AHRI Air-Cooled Water-Chilling Packages Certification Program, but is rated in accordance with AHRI Standard 550/590 (I-P) and AHRI Standard 551/591 (SI).”

3.7.5.4 New Product Introduction Units. “New Product Introduction which is not certified in accordance with AHRI Air-Cooled Water-Chilling Packages Certification Program, but is rated in accordance with AHRI Standard 550/590 (I-P) and AHRI Standard 551/591 (SI). New Product Introduction Units may be found at www.ahrinet.org.”

3.7.5.5 Alternate Certification. If a selection is presented in accordance with another standard or certification program (i.e. certified by an organization other than AHRI) the following statement may be included: “Within the scope of AHRI Air-Cooled Water-Chilling Packages Certification Program. AHRI Certified performance may be obtained from the manufacturer’s representative.”

3.7.6 Additional Statements Regarding Certification. In addition to statements shown in Sections 3.7.4 and 3.7.5, Primary Selection Rating Application outputs which reference AHRI shall include all of the statements shown in Sections 3.7.6.1 through 3.7.6.4 that apply.

3.7.6.1 Non-Standard Tolerances. Performance presented with Non-Standard Tolerances (i.e. tolerances that are more stringent than those specified in AHRI Standard 550/590 (I-P) and AHRI Standard 551/591 (SI)) shall be presented with the following statement: “Performance presented with Non-Standard Tolerances”.

3.7.6.2 Combined Units or Modular Chiller Array System Selections. For performance presented with combined units or Modular Chiller Array systems the following statement shall be presented: “Combined units or modular chiller array rating is outside of the scope of the AHRI Air-Cooled Water-Chilling Packages Certification Program. Individual unit ratings are subject to the governing documents of the AHRI Certification Program.”

3.7.6.3 Units with an Evaporator which Contains Liquid for Freeze Protection. For performance presented of units with an evaporator which contains liquid for freeze

protection, the following statement shall be presented: “Unit contains freeze protection liquids in the evaporator and is certified when rated per the Standard with water.”

Note: Performance of the unit rated per the Standard with water shall be displayed on the same selection software output or catalog; otherwise, the selection is outside the scope of the certification program.

3.7.6.4 Units Certified In Accordance with EN Standards. For performance presented of units certified in accordance with EN Standards 14511 and 14825 the following statement shall be presented: “Unit is certified in accordance with EN Standards 14511 and 14825 Standard Rating Conditions.”

3.7.7 Primary Catalog / Selection Rating Application Language. The Primary Catalog / Selection Rating Application must be capable of operating in English (all informational screens, inputs, and outputs). Operation in Mandarin Chinese is allowed if all technical information is a direct translation from the English version, and all Published Ratings shall be identical. The Statements Regarding Certification may be stated in Mandarin Chinese, per Appendix D. No other languages are allowed.

3.8 Tested and Certified Ratings. This Program tests and certifies Air-Cooled Water-Chilling Packages Ratings as defined in this Section. For 2019, 2020 and 2021, the AHRI Certified operating map is specified in Appendix A.

3.8.1 Tested Cooling Ratings. AHRI tests published ratings to AHRI Standards 550/590 (I-P) and 551/591 (SI) and EN Standards 14511 and 14825.

3.8.1.1 AHRI Standards 550/590 (I-P) and 551/591 (SI) Ratings. The following ratings are verified by test in accordance with AHRI Standards 550/590 (I-P) and 551/591 (SI):

- Full-load cooling capacity;
- Cooling efficiency;
- Evaporator water pressure drop; and
- Integrated Part-load Value (IPLV.IP or IPLV.SI) or
- Non-Standard Part-load Value (NPLV.IP or NPLV.SI).

Units that are not able to operate at Standard Rating Conditions shall be tested at the unit design conditions and NPLV.IP or NPLV.SI conditions.

Additionally, AHRI shall select a random point within each unit’s published AHRI Certified operating map. This random operating point (5th point) shall be selected to allow AHRI to certify the published operating map conditions at which the unit can operate.

AHRI will select a capacity for the 5th point. Selection software programs may not be able to add the 5th point condition to the selection of the unit at Standard Rating Conditions. If a separate selection is needed to generate performance at the 5th point condition, the capacity requested by AHRI should be the target. See B4.1 for an example.

For 5th point testing, Tolerance 1, performance tolerance limit (Tol₁) shall be calculated per the Standard using the following definitions for percent load (%Load) and temperature differential at rated full load design conditions (ΔT_{FL}). See B5.1 for an example.

$$\%Load = \frac{AHRI\ Selected\ Condition\ Capacity}{100\% \ IPLV\ or\ 100\% \ NPLV\ Rating\ Condition\ Capacity}$$

Where:

$\%Load \leq 100\%$ for any value of AHRI Selected Condition Capacity

$\Delta T_{FL} = 100\% \ IPLV \ or \ 100\% \ NPLV \ Rating \ Condition \ \Delta T$

3.8.1.2 EN Standards 14511 and 14825 Ratings. For units certified to EN Standards 14511 and 14825, The following ratings are verified by test at EN Standard Rating Conditions in accordance with EN Standards 14511 and 14825:

- Full-load cooling capacity;
- Cooling efficiency;
- Evaporator water pressure drop;
- Seasonal Energy Efficiency Ratio (SEER); and
- Off mode ratings listed below.
 - Thermostat off
 - Standby
 - Crankcase heater (as applicable)
 - Off (as applicable)

3.8.2 Certified Cooling Ratings. AHRI certifies published ratings to AHRI Standards 550/590 (I-P) and 551/591 (SI) and EN Standards 14511 and 14825.

3.8.2.1 AHRI Standards 550/590 (I-P) and 551/591 (SI) Ratings. AHRI certifies the following published operating map ratings in accordance with AHRI Standards 550/590 (I-P) and 551/591 (SI):

- Full-load cooling capacity operating map (100% of rated full-load capacity);
- Cooling efficiency operating map (100% to 25% of rated full-load capacity);
- Evaporator water pressure drop operating map (100% to 25% of rated full-load capacity);
- Integrated Part-load Value (IPLV.IP and IPLV.SI); and
- Non-Standard Part-load Value (NPLV.IP or NPLV.SI).

3.8.2.2 EN Standards 14511 and 14825 Ratings. For units certified to EN Standards 14511 and 14825, AHRI certifies the following published EN Standard Rating Condition ratings in accordance with EN Standards 14511 and 14825:

- Full-load cooling capacity;
- Cooling efficiency;
- Evaporator water pressure drop; and
- Seasonal Energy Efficiency Ratio (SEER).

3.9 Test Failures. Test failures shall be determined in accordance with Section 5 of the Standard or any full-load test condition in which the unit cannot operate.

3.9.1 Options Following First Sample Failure. When the Participant is notified of a first sample certified rating failure, the Participant has seven (7) calendar days to select one (1) of the following options:

- Re-rate all models within the failed sample's BMG per Section 3.9.4.
 - For all 5th Point test failures with the exception of water pressure drop, refer to Section 3.9.3. The Participant may elect not to conduct any additional testing because the entire operating map will be re-rated if the re-rate option is chosen.
 - Water Pressure Drop re-rates shall be across the entire operating map.
 - Only certified ratings (e.g. capacity, efficiency, water pressure drop, or IPLV) that fail the original test are required to be re-rated. Refer to Section 9 of the AHRI General Operations Manual.
 - An additional test is required in the year following an involuntary re-rate per Section 3.9.4.1.
- Test a second sample to the same Standard that was used with the first sample. The second sample shall:
 - Have similar published performance (within +/- 10% capacity and 0 to 5% improved full-load efficiency and IPLV.IP/IPLV.SI or NPLV.IP/NPLV.SI at the same conditions as the first sample)
 - Be within the same BMG of the first sample
 - Have the same country of origin as the first sample
 - Be available for witness testing or ship to the Laboratory for testing within 90 calendar days following notification of decision to AHRI via Manufacturer's Decision form [MDF]
- Obsolete the model, which also obsoletes the corresponding BMG.

3.9.2 Options Following Second Sample Failure. When the Participant is notified of a second sample certified rating failure, the Participant has seven (7) calendar days to select one of the following options:

- Re-rate all models within the failed sample's BMG, per Section 3.9.4. (for all 5th Point test failures with the exception of Water Pressure Drop refer to Section 3.9.3); or
- Obsolete the model, which also obsoletes the corresponding BMG.

3.9.3 5th Point Failure Re-rate Procedure. This is performed immediately after the failure and before the MDF is issued. The Participant is responsible for all additional fees associated with this procedure.

- Four (4) additional tests of the failed certified rating(s) shall be conducted at Participant-defined higher and lower capacities and higher and lower lift conditions relative to the failed test point condition.
- Certified ratings that passed the original test are not retested and are not required to be re-rated.
- If the original failed point is at or close to an operating boundary limit (maximum capacity and/or maximum lift capability), three (3) points may be used provided that the Participant demonstrate that the points define a region around the failed point and the operating boundary, with two (2) of the three (3) points lying on the boundary limit.
- If one (1) or more of the additional test points fail, testing shall be conducted in an expanding search window until a sufficient number of test points pass to define a region around the original failed point.
- For discrete unloading machines, it may be necessary to choose the additional test points at the next stage of unloading.
- Published ratings shall be re-rated within the entire region from the original failed test point to the surrounding passing test points. Interpolation may be used to determine the passing test points. Performance shall be re-rated by the percentage difference between the original test failure and the original ratings.

No adjustment for testing tolerances is allowed; the re-rated performance at the failed test point must be equal to or worse than the tested performance.

- At any time during this procedure, the Participant may elect a different Sample Failure Option (refer to Sections 3.9.1 and 3.9.2) or decide to re-rate the entire operating map.
- Refer to B6.1 for an example.

3.9.4 Re-rate Requirements for Water-Chilling Packages. In addition to completing the Actions required by Section 8.2 of the AHRI General OM, the Participant shall provide the following to AHRI within 60 calendar days of test failure notification.

- A written description of the changes made to performance prediction calculations which explain the magnitude and range of revised performance.
- Performance generated from the Primary Catalog / Selection Rating Application before and after the re-rate which shows the magnitude and range of revised performance for a representative sample of models within the failed sample BMG.

3.9.4.1 Involuntary Re-rate Confirmation. Following an involuntary re-rate, participants shall be subject to a Penalty Test in addition to the requirements of Section 3.1, to confirm the re-rated performance of a model selected from the re-rated BMG. Depending on when the re-rate occurs, the Penalty Test may be assigned to the same test year as the failed test or the following test year. If the re-rated BMG is discontinued, then a model from another BMG shall be selected to complete the Penalty Test. The Penalty Test satisfies the requirements of Section 9.16 of the General OM.

4. Challenge Tests

Challenge Test process shall proceed according to the AHRI General Operations Manual, Section 10.

5. AHRI Directory of Certified Product Performance

All certified products shall be listed in the Directory, www.ahridirectory.org and all approved Test Stands shall be listed on the ACCL Certification Program website. Certification shall not be implied nor claimed for any product not listed in the Directory, and AHRI approval shall not be implied nor claimed for any Test Stand not listed in the ACCL Certification Program website.

Except as noted below, the Participant shall follow the steps outlined in Section 11 of the AHRI General Operations Manual.

5.1 Publication of Certified Products or New Product Introduction Directories. The following information pertaining to each certified model shall be published in the Directory as defined in Table 3:

Information	Certified Product Directory		New Product Introduction Directory	
	Public ^a	Private ^b	Public ^a	Private ^b
AHRI Certified Reference Number ^c	X			
Model Status	X			
Manufacturer	X		X	
Brand Name	X		X	
Model Designation ^d	X		X	
Refrigerant Used per ASHRAE 34 ^c	X		X	
Compressor Model Series Information	X		X	
Compressor Type ^c (Reciprocating, Scroll, Centrifugal or Screw)	X		X	
Primary Catalog or Selection Rating Application Name	X			
Primary Catalog or Selection Rating Application Version	X			
Hertz ^c (50 or 60 Hz)	X		X	
Country of Origin ^c	X		X	
Manufacturing Location, City ^c		X		X
Nominal Cooling Capacity Range ^e (kW or tons) – Low and High	X		X	
Certified by AHRI to EN 14511 and EN 14825 (Yes or No)	X			
Variable Speed Compressor Control Available (Yes or No) ^c		X		X
Basic Model Group Number ^c		X		
New Product Introduction Approval Date			X	

Notes:

- Public Listing Information may be viewed in the public portion of the Directory at www.ahridirectory.org.
- Private Listing Information for each Participant’s listings may only be viewed by Participants whose company corresponds to that listing.
- Information is linked between OEM and PBM listings.
- May refer to a single model or range of models.
- Nominal Capacity refers to the named capacity of units rated at full-load AHRI Standard 550/590 (I-P) Standard Rating Conditions. This value is not AHRI Certified and intended only for general categorization of Basic Model Groups.

5.2 **Data Forms.** Each OEM and PBM Participant shall list and submit its certified model listings via the Directory. AHRI shall be notified any time changes or additions are made to model listings.

5.3 **Publication of Approved Test Stands in the Directory.** The following information pertaining to approved Test Stands shall be published in the Directory as defined in Table 4:

Table 4. Publication of Approved Test Stands in the Test Stand Directory		
Information	Public ^a	Private ^b
Test Stand Reference Number	X	
Manufacturer	X	
Test Stand Designation	X	
City and Country of Location	X	
Maximum AHRI Approved Capacity (tons or kW)	X	
Date Maximum AHRI Approved Capacity Expires		X
Facility Address		X
Facility Contact (name, phone number, email)		X
AHRI Inspection Date		X
Approval Expiration Date		X
Date Provided Testing to Another Participant		X
<p>Notes:</p> <p>a. Public Listing Information may be viewed in the public portion of the Directory at the ACCL Certification Program website.</p> <p>b. Private Listing Information for each Participant's listings may only be viewed by Participants whose company corresponds to that listing.</p>		

6. Assessment and Payment of Certification Fees

Except as noted below, the assessment and payment of certification fees shall proceed according to the AHRI General Operations Manual, Section 12.

6.1 Equipment Delivery/Disposal Fees. The Participant is responsible for the delivery and expenses associated with shipping test samples to and from the Laboratory or another AHRI approved Test Stand. Following the completion of the test, the Participant shall provide instruction to the Laboratory regarding the disposal/shipment of the sample(s). The Laboratory shall invoice the Participant for expenses associated with the disposal/shipment of sample from the Laboratory to a location designated by the Participant.

7. Issuance of Violations and/or Terminations

Except as noted below, the Issuance of Violations and/or Termination shall proceed according to the AHRI General Operations Manual, Section 14.

7.1 Program Violation. When a Participant breaches any term(s) of the Governing Documents, they shall receive a program violation. Each instance of program violation will remain on the Participant's record for three (3) consecutive years from the violation letter date.

7.1.1 Program Violation Letter. AHRI will send a program violation letter providing:

- The specific term(s) of the Governing Documents breached;
- The assigned Violation Level Type per Table 5;
- Required corrective action and, in some cases, a request for evidence of corrective action; and
- Instructions for appealing the violation.

Table 5. Program Violation Level Types and Examples	
Level 1: Performance Based Violations	<ul style="list-style-type: none"> • Misrepresentation of AHRI Certified Data within the defined Operating Map of AHRI Standards 550/590 (I-P) and 551/591 (SI); • Violations of Certify-All Policy; • Failure to issue corrections to marketing materials and Published Ratings for a re-rate due to test failure; • Failure to correct a program violation; or • Improper or unauthorized claims to AHRI Certification from an AHRI approved Catalog / Selection Rating Application.
Level 2: Administrative Based Violations	<ul style="list-style-type: none"> • Failure to maintain accurate product data in AHRI Directory; • Misleading marketing using the AHRI name or AHRI Certification Mark; • Misleading marketing material with improper or unauthorized claims to AHRI Certification; • Failure to provide AHRI with most recent version(s) of Primary Catalog / Selection Rating Application(s); • Failure to submit product-specific data submittal forms for new model listings prior to listing in the AHRI Directory; or • Failure to provide test samples for selection and testing within required timeframe.
<p><i>Note: The examples in this table are not exhaustive. For violations not covered in this example, AHRI will assign a Program Violation Level in accordance with the severity of the Governing Document breach.</i></p>	

7.1.2 Accumulation of Program Violations. If program violations accumulate, they will have consequence per Table 6.

Table 6. Consequences of Program Violation Accumulation^{a,b}	
Seven (7) Level 1 Violations accumulated within a consecutive three-year period	<ul style="list-style-type: none"> Participant will be terminated from the certification program as per the AHRI General OM;
Five (5) Level 1 Violations accumulated within a consecutive three-year consecutive period	<ul style="list-style-type: none"> Certification participant is listed in the AHRI Directory for one (1) year as having five (5) or more Level 1 Violations in a three-year consecutive period (violation reason will not be listed) \$10,000 flat fee to be invested back into AHRI Certification Programs
Three (3) Level 1 Violations accumulated within a consecutive three-year period	<ul style="list-style-type: none"> \$10,000 flat fee to be invested back into AHRI Certification Programs
Two (2) Level 1 Violations or any combination of three (3) Violations (Level 1 and Level 2) accumulated within a one-year period	<ul style="list-style-type: none"> Participant and Company Executive Officer to submit corrective action plan for review and discussion at AHRI's office in Arlington, VA
Three (3) Level 2 Violations within a consecutive three-year period	<ul style="list-style-type: none"> Equivalent to receiving one (1) Level 1 violation
<p>Notes:</p> <p>a. As per Section 12.4, Payment Deadlines, of the AHRI General OM, Failure to make payment shall result in removal of Directory data and Termination for Non-Payment.</p> <p>b. Consequences shown are administered sequentially across the one-year or three-year time period in which the violations are accumulated. For example, a Participant is required to pay a \$10,000 flat fee for the third violation accumulated within a consecutive three-year period, but a Participant is not required to pay a \$10,000 flat fee for the fourth violation accumulated within a consecutive three-year period.</p>	

8. Program Hierarchy, Complaints, and the Appeals Process

Refer to Section 15 of the AHRI General Operations Manual.

9. Proper Use of the AHRI Certification Mark and Claims to Certification

9.1. AHRI Verification and Validation of Published Ratings.

9.1.1 Published Primary Rating Verification. AHRI provides verification of Primary Published Ratings to all legitimate parties. Verifications shall only be made on jobs in which the Primary Catalog / Selection Rating Application implemented by the user matches that of the Primary

Catalog / Selection Rating Application shown in the AHRI Directory. All requesters shall provide the following information before verifications are completed:

- Name of the Requester;
- Affiliation of the Requester;
- Contact information of the Requester (email, phone number);
- Original job submittal with the job name;
- Performance provided in accordance with Section 3.8.1.2; and
- If available, the Manufacturer representative that provided the selection.

9.1.2 Published Rating Validation. Primary and Secondary Published Ratings are subject to validation to confirm compliance with the Program requirements at the time of publication.

9.1.3 Responsibility of Participant for Primary Catalog / Selection Rating Application Revisions. Whenever a Participant's Primary Catalog / Selection Rating Application is revised, the Participant shall promptly supply the revised version(s) to AHRI. Version numbers shall comply with the following:

- Version shall be in increasing numerical order so that the revision level can be determined by AHRI;
- Version shall match the number listed on the performance output data sheet generated from the Selection Rating Application and the Directory; and
- Version shall be tied to ratings; if any ratings are changed, a new version of the application shall be issued.

Notification to AHRI of revisions to Secondary Catalog / Selection Rating Application is not required.

Once the Participant notifies AHRI that the Primary Catalog / Selection Rating Application has been successfully installed, AHRI shall grant approval of the Selection Rating Application within seven (7) calendar days.

Upon approval from AHRI, the Participant may release the Primary Catalog / Selection Rating Application to other users. Primary Catalog / Selection Rating Application released to other users prior to obtaining approval from AHRI shall result in a program violation. Participants shall not be allowed to make changes to Primary Catalog / Selection Rating Application version updates until the Participant has obtained approval from AHRI.

9.2 Changes to Directory Listings. AHRI shall be informed of changes to certified products prior to such changes being implemented. The Participant shall submit the following to AHRI for approval:

- An explanation of the changes proposed, indication of any effects on published ratings, and an approximate date on which production of the changed chiller(s) is to begin.
- Updated Primary Catalog / Selection Rating Application that includes the updated performance.

AHRI shall grant approval of the submitted changes within seven (7) calendar days.

AHRI approval is required for newly created Directory listings or changes to the following information fields:

- Refrigerant Used per ASHRAE 34
- Compressor Model Series Information
- Nominal Capacity Units
- Nominal Capacity Range (Low or High)
- Certified to EN 14511 and EN 14825

The following information in the AHRI Directory may not be changed for existing listings. If changes are needed, the Participant must create new listings and, if applicable, discontinue the old listings.

- Brand Name
- Model Designation
- Compressor Type
- Hertz
- Country of Origin
- Application
- Manufacturing Location, City
- Variable Speed Compressor Control Available

For updates to the Primary Catalog / Selection Rating Application refer to Section 9.1.3.

10. Test Stand Availability Requirements

10.1 Purpose. To promote participation in and the integrity of this Program, Participants shall make available test stands for Participants not having the ability to test products which they wish AHRI to certify.

10.2 Definitions.

10.2.1 Test Stand Provider. A Participant who is allowing the use of their test facility by another Participant for certification testing.

10.2.2 Test Stand User. A Participant who is using another Participant's test facility for certification testing.

10.3 Requirements.

10.3.1 AHRI. AHRI shall work directly with the Test Stand Provider and Test Stand User to determine the location and date of each test and shall promote the equal distribution of testing among all Program Participant's test facilities by global region (China, Europe, India, Middle East, North America).

10.3.2 Test Stand Provider. The Test Stand Provider shall:

- Allow AHRI Certification testing of Test Stand User's units at AHRI approved test facilities within 120 days of notification by AHRI;
- Permit Test Facility Users to witness the testing in accordance with the Program Governing Documents. All data, test results, calculations, reports, information and other documents gathered or prepared by Test Stand Provider become the property of AHRI in accordance with the Program License Agreement and shall be removed (i.e. deleted and destroyed) from the records of the Test Stand Provider immediately after it has been provided to AHRI;
- Operate the Test Stand when conducting testing to be witnessed by the Representative. The Test Stand User shall not be permitted to participate in the operation of the Test Stand during test but may supervise the operation and adjustment of the chiller; and
- Invoice the Test Stand User testing fees which have been approved by the AHRI ACCL Compliance Committee for AHRI Certification Program testing.

10.3.3 Test Stand User. The Test Stand User shall:

- Schedule AHRI Certification testing at AHRI approved test facilities a minimum of 60

- days prior to testing; and
- Provide installation and setup instructions a minimum of 30 days prior to testing; and
- Pay invoiced Test Stand User testing fees.

The Test Stand User may provide personnel to witness the setup, testing, and tear down of the unit. These personnel shall be escorted at all times by the Test Stand Provider.

APPENDIX A: CERTIFICATION OF AIR-COOLED WATER-CHILLING PACKAGES FOR 2019-2021

A1.1 *Purpose.* To provide a framework for the certification of the Air-Cooled Water-Chilling Packages operating map in the 2019, 2020, and 2021 year.

A2.1 *Operating Map of Air-Cooled Water-Chilling Packages for 2019-2021.* The Air-Cooled Water-Chilling Packages operating map at full-load in the range of 55°F to 125.6°F Enter Air Temperature and 36°F to 70°F Leaving Evaporator Water Temperature. The part-load operating map of the Air-Cooled Water-Chilling Packages program scope in 2019, 2020, and 2021 years are defined below.

A2.1.1 *2019 Part-load Operating Map.* In 2019, the Air-Cooled Water-Chilling Packages operating map at part-load is in the range in of Tables A1.1, A1.2 and Figure A1 below.

Table A1: ACCL Part-load Operating Map Boundaries for 2019				
Part Load %	25%	41.70%	100%	100%
Enter Air Temperature °F	55.0	55.0	90.0	100.0
Enter Air Temperature °C	12.8	12.8	32.2	37.8

Table A2: ACCL Part-load Operating Map Boundaries for 2019				
Enter Air Temperature °F	55.0	55.0	100.0	100.0
Enter Air Temperature °C	12.8	12.8	37.8	37.8
Leaving Evaporator Water Temperature °F	39.00	49.00	39.00	49.00
Leaving Evaporator Water Temperature °C	3.89	9.44	3.89	9.44

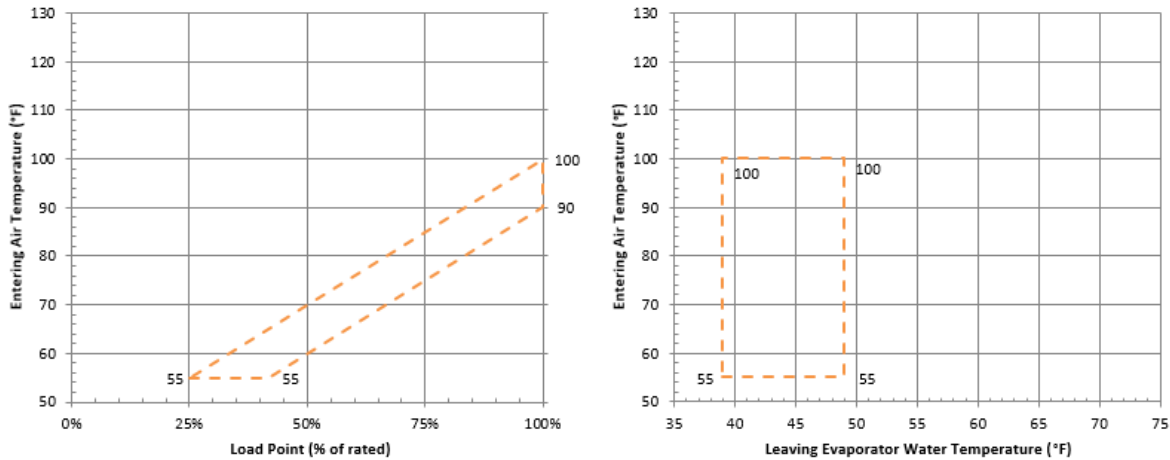


Figure A1: ACCL Part-load Operating Map for 2019

A2.1.2 *2020 Part-load Operating Map.* In 2020, the Air-Cooled Water-Chilling Packages operating map at part-load is in the range in of Tables A2.1, A2.2 and Figure A2 below.

Table A3: ACCL Part-load Operating Map Boundaries for 2020					
Part Load %	25%	25%	50%	100%	100%
Enter Air Temperature °F	55.0	85.0	55.0	80.0	115.0
Enter Air Temperature °C	12.8	29.4	12.8	26.7	46.1

Table A4: ACCL Part-load Operating Map Boundaries for 2020				
Enter Air Temperature °F	55.0	55.0	115.0	115.0
Enter Air Temperature °C	12.8	12.8	46.1	46.1
Leaving Evaporator Water Temperature °F	36.00	54.00	36.00	54.00
Leaving Evaporator Water Temperature °C	2.22	12.22	2.22	12.22

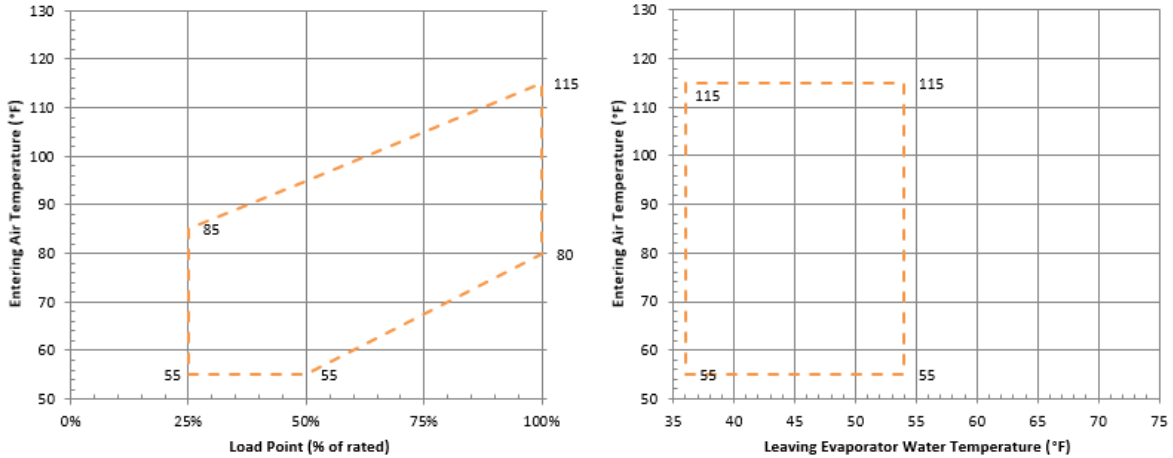


Figure A2: ACCL Program Scope for the 2020 Program Year

A2.1.3 *2021 and Beyond Part-load Operating Map*. In 2021 and beyond, the Air-Cooled Water-Chilling Packages operating map at part-load is in the range in of Table A3.1, A3.2 and Figure A3 below.

Table A5: ACCL Part-load Operating Map Boundaries for 2021				
Part Load %	25 %	25%	100%	100%
Enter Air Temperature °F	55.0	125.6	55	125.6
Enter Air Temperature °C	12.8	52.0	12.8	52.0

Table A6: ACCL Part-load Operating Map Boundaries for 2021				
Enter Air Temperature °F	55.0	55.0	125.6	125.6
Enter Air Temperature °C	12.8	12.8	52.0	52.0
Leaving Evaporator Water Temperature °F	36.00	70.00	36.00	70.00
Leaving Evaporator Water Temperature °C	2.22	21.11	2.22	21.11

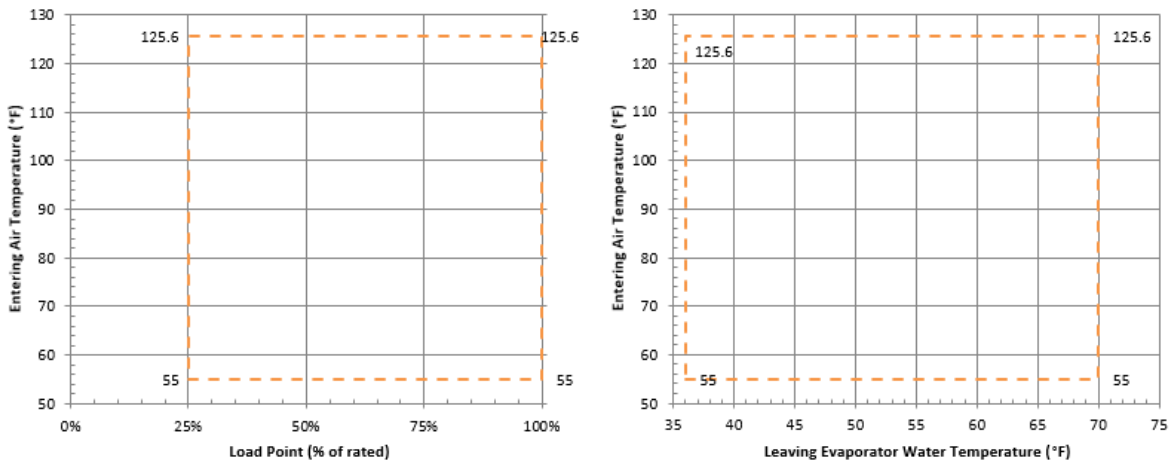


Figure A3: ACCL Program Scope for the 2021 Program Year

APPENDIX B: EXAMPLES

B1.1 Optional Certification Example 1: Same Product, Multiple Countries of Origin. A Participant manufactures a model within the optional certification range per Table 1 in two countries and chooses to certify the product from one country but not the other. Per Section 1.3.1 the selection software output sheet must list the country of origin. This is required to avoid market confusion resulting from two output sheets for the same model and performance showing one as certified as one as not certified.

B2.1 Optional Certification Example 2: Same Product Sold for Use Both Inside and Outside Intended Market. A Participant manufactures a product that is marketed and sold for use inside the U.S. and Canada and falls within the required certification range per Table 1. The Participant manufactures the same product from the same country of origin for use outside the U.S. and Canada, which falls in the optional certification range. If the Participant does not wish to claim certification when marketing outside the U.S. and Canada, they are required to use a different Model Designation from the certified product. Otherwise, it would be indistinguishable from the certified product in the AHRI Directory and in the selection software, since intended market is not listed in the AHRI Directory.

B3.1 Optional Certification Example 3: Splitting a Product Family into Multiple BMGs. A Participant manufactures and markets a family of products within the optional certification range per Table 1 using model nomenclature “XYZ” followed by additional values to indicate specific unit characteristics. The Participant wishes to split the product family into multiple BMGs and chooses to optionally not certify some models.

- Model XYZ20 – BMG1
- Model XYZ30 – Not Certified
- Model XYZ50 – BMG 2

The above would be acceptable as long as all marketing materials, selection software, and the AHRI Directory make it clear which models are certified and which are not. For example, listing Model Designation in the Directory as “XYZ” would not be acceptable as this may imply XYZ30 is certified.

B4.1 5th Point Capacity and Percent Load Example. A chiller will be tested at Standard Rating Conditions as listed in Table B1. AHRI selects the 5th point as 195 tons, 46°F evaporator leaving water temperature, 58°F evaporator entering water temperature, and 80°F ambient air.

Table B1: Standard Rating Conditions				
% Load	Capacity ton	Entering Water Temperature °F	Leaving Water Temperature °F	Ambient Air Temperature °F
100.0	325.0	54.00	44.00	95.0
75.0	243.8	51.50	44.00	80.0
50.0	162.5	49.00	44.00	65.0
25.0	81.25	46.50	44.00	55.0

To generate the performance at the 5th point conditions, the selection software calculates a new full load capacity of 350 tons due to the selected temperatures. The test will be run at the 55.7% load conditions

listed in Table B2. The 350 ton and 55.7% load values are not used in any calculations.

% Load	Capacity ton	Entering Water Temperature °F	Leaving Water Temperature °F	Ambient Air Temperature °F
100.0	350.0	58.00	46.00	80.0
55.7	195.0	58.00	46.00	80.0

B5.1 **5th Point Tolerance Example.** For the chiller in B4.1, the 5th point tolerance is calculated using Percent Load and ΔT_{FL} as listed below.

$$\% \text{ Load} = 195 \text{ tons} / 325 \text{ tons} = 60\%$$

$$\Delta T_{FL} = 100\% \text{ IPLV or } 100\% \text{ NPLV Rating Condition } \Delta T = (54^\circ\text{F} - 44^\circ\text{F}) = 10^\circ\text{F}$$

B6.1 **5th Point Re-Rate Example.** AHRI selects the 5th point as 70% Load and 80°F air temperature for a discrete unloading chiller. The Participant’s selection rating software generates performance at these conditions. The chiller is tested at 60% Load and 80% Load, and interpolation is used to calculate the performance at 70% Load. The test fails at 8% below rated efficiency, and the Participant decides to re-rate.

The Participant selects four (4) additional test points as shown in Figure B1. Efficiency at all four points passes, so no further testing is required. The Participant chooses to use interpolation to determine four (4) additional intermediate points that pass, and these points are used to determine the re-rate boundary. The re-rate must be applied to reduce efficiency within the entire shaded region by 8%.

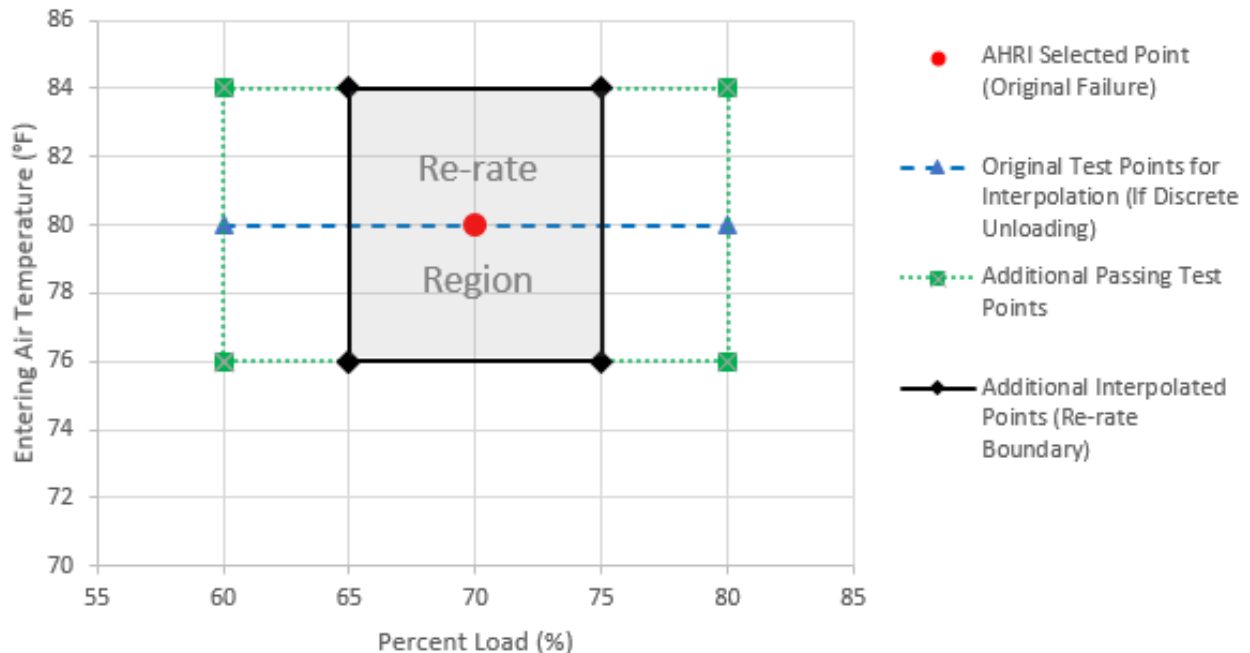
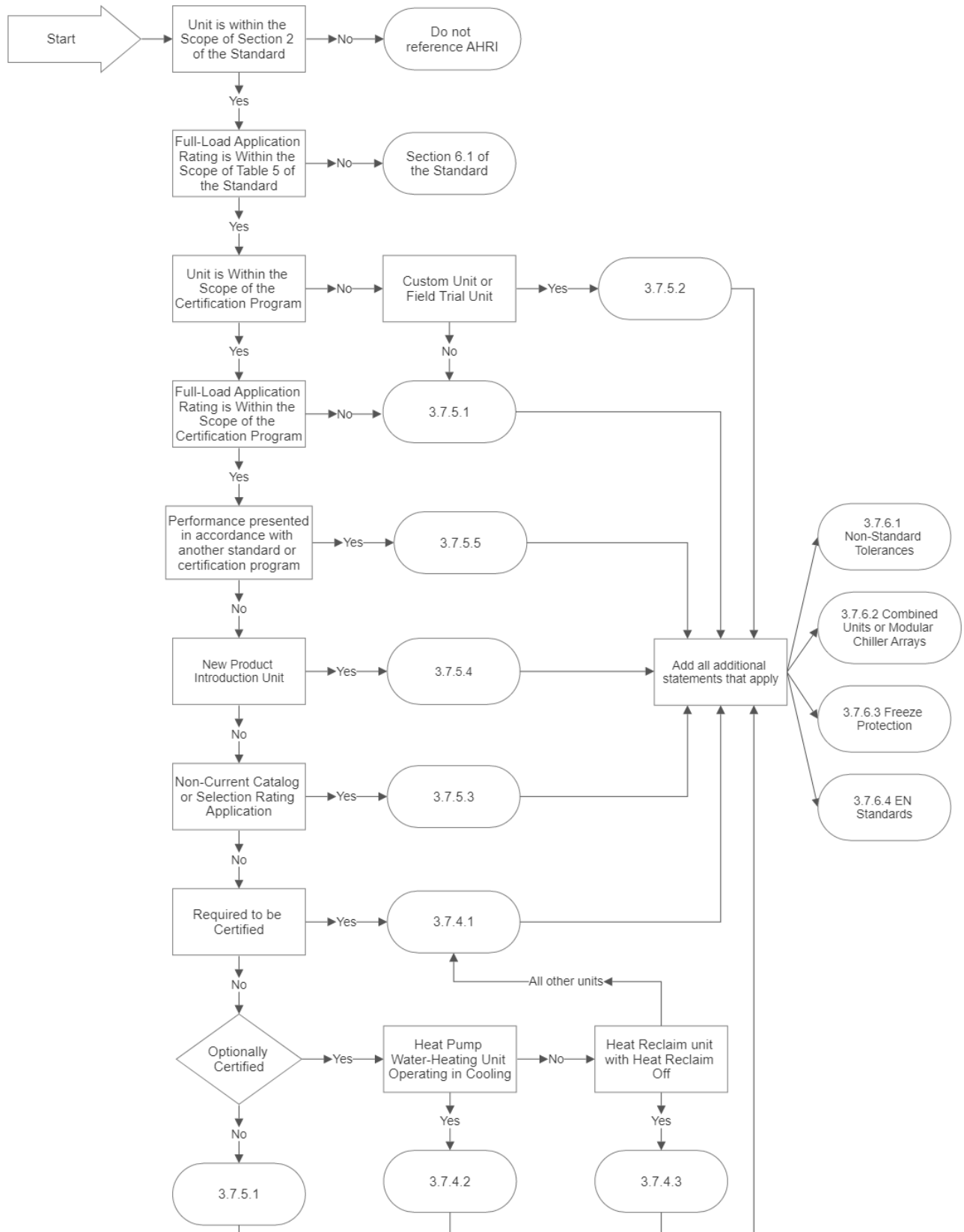


Figure B1: Example of 5th Point Re-rate

APPENDIX C: CERTIFICATION STATEMENT FLOWCHART



APPENDIX D: STATEMENTS REGARDING CERTIFICATION – MANDARIN CHINESE

Listed below are translations of the statements regarding certification from sections 3.7.4, 3.7.5, and 3.7.6 of this Operations Manual into Mandarin Chinese, for use in accordance with Section 3.7.7.

3.7.4 *Statements Regarding Certification – Certified Selections.*

3.7.4.1 *Units in which Statements 3.7.4.2 and 3.7.4.3 Do Not Apply.* “Certified in accordance with the AHRI Air-Cooled Water-Chilling Packages Certification Program, which is based on AHRI Standard 550/590 (I-P) and AHRI Standard 551/591 (SI). Certified units may be found in the AHRI Directory at www.ahridirectory.org”

基于 AHRI 550/590 (I-P) 和 AHRI 551/591 (SI) 标准, 并根据 AHRI 风冷冷水机组认证规则获得认证。该认证产品可通过 AHRI 认证产品目录 www.ahridirectory.org 查阅。

3.7.4.2 *Heat Pump Water-Heating Units Operating in Cooling.* “Certified in accordance with the AHRI Air-Cooled Water-Chilling Packages Certification Program, which is based on AHRI Standard 550/590 (I-P) and AHRI Standard 551/591 (SI). Heat Pump Water-Heating unit is certified when operating in cooling. Certified units may be found in the AHRI Directory at www.ahridirectory.org.”

基于 AHRI 550/590 (I-P) 和 AHRI 551/591 (SI) 标准, 并根据 AHRI 风冷冷水机组认证规则获得认证。风冷热泵机组仅认证制冷模式的性能, 该认证产品可通过 AHRI 认证产品目录 www.ahridirectory.org 查阅。

3.7.4.3 *Heat Reclaim Units with Heat Reclaim Off.* “Certified in accordance with the AHRI Air-Cooled Water-Chilling Packages Certification Program, which is based on AHRI Standard 550/590 (I-P) and AHRI Standard 551/591 (SI). Heat Reclaim unit is certified when operating with heat reclaim off. Certified units may be found in the AHRI Directory at www.ahridirectory.org.”

基于 AHRI 550/590 (I-P) 和 AHRI 551/591 (SI) 标准, 并根据 AHRI 风冷冷水机组认证规则获得认证。热回收机组仅认证热回收功能关闭时的制冷模式性能。该认证产品可通过 AHRI 认证产品目录 www.ahridirectory.org 查阅。

3.7.5 *Statements Regarding Certification – Non-Certified Selections.*

3.7.5.1 *Units in which Statements 3.7.5.2 through 3.7.5.5 Do Not Apply.* “Outside the scope of AHRI Air-Cooled Water-Chilling Packages Certification Program or not optionally certified, but is rated in accordance with AHRI Standard 550/590 (I-P) and AHRI Standard 551/591 (SI).”

AHRI风冷冷水机组认证范围以外的产品且不属于可选择性认证的范围, 但其性能基于 AHRI 550/590 (I-P) 和 AHRI 551/591 (SI) 标准进行标称。

3.7.5.2 *Custom or Field Trial Units.* “Custom Unit which is not certified in accordance with AHRI Air-Cooled Water-Chilling Packages Certification Program, but is rated in accordance with AHRI Standard 550/590 (I-P) and AHRI Standard 551/591 (SI).”

用户定制机型未按照 AHRI 风冷冷水机组认证规则进行认证，但其性能基于 AHRI 550/590 (I-P) 和 AHRI 551/591 (SI) 标准进行标称。

3.7.5.3 Non-Current Catalog or Selection Rating Application Version. “Non-Current Selection which is not certified in accordance with AHRI Air-Cooled Water-Chilling Packages Certification Program, but is rated in accordance with AHRI Standard 550/590 (I-P) and AHRI Standard 551/591 (SI).”

未包含在最新选型软件中也未按照 AHRI 风冷冷水机组认证规则进行认证，但其性能基于 AHRI 550/590 (I-P) 和 AHRI 551/591 (SI) 标准进行标称。

3.7.5.4 New Product Introduction Units. “New Product Introduction which is not certified in accordance with AHRI Air-Cooled Water-Chilling Packages Certification Program, but is rated in accordance with AHRI Standard 550/590 (I-P) and AHRI Standard 551/591 (SI). New Product Introduction Units may be found at www.ahrinet.org.”

新产品暂尚未按照 AHRI 风冷冷水机组认证规则进行认证，但其性能基于 AHRI 550/590 (I-P) 和 AHRI 551/591 (SI) 标准进行标识，新产品可以通过 www.ahrinet.org 查阅。

3.7.5.5 Alternate Certification. “Within the scope of AHRI Air-Cooled Water-Chilling Packages Certification Program. AHRI Certified performance may be obtained from the manufacturer’s representative.”

在 AHRI 风冷冷水机组认证范围内的产品，其认证的性能可以从制造商代表处获取。

3.7.6 Additional Statements Regarding Certification.

3.7.6.1 Non-Standard Tolerances. “Performance presented with Non-Standard Tolerances”.

非标准公差描述的产品性能。

3.7.6.2 Combined Units or Modular Chiller Array System Selections. “Combined units or modular chiller array rating is outside of the scope of the AHRI Air-Cooled Water-Chilling Packages Certification Program. Individual unit ratings are subject to the governing documents of the AHRI Certification Program.”

多机组并联系统在 AHRI 风冷冷水机组认证范围之外，但单台机组的性能可根据 AHRI 认证规则进行认证。

3.7.6.3 Units with an Evaporator which Contains Liquid for Freeze Protection. “Unit contains freeze protection liquids in the evaporator and is certified when rated per the Standard with water.”

冷水机组含有防冻液，其性能是基于流体是水进行认证的。

3.7.6.4 Units Certified In Accordance with EN Standards. “Unit is certified in accordance with EN Standards 14511 and 14825 Standard Rating Conditions.”

冷水机组是基于 EN 14511 和 14825 标准进行性能认证的。